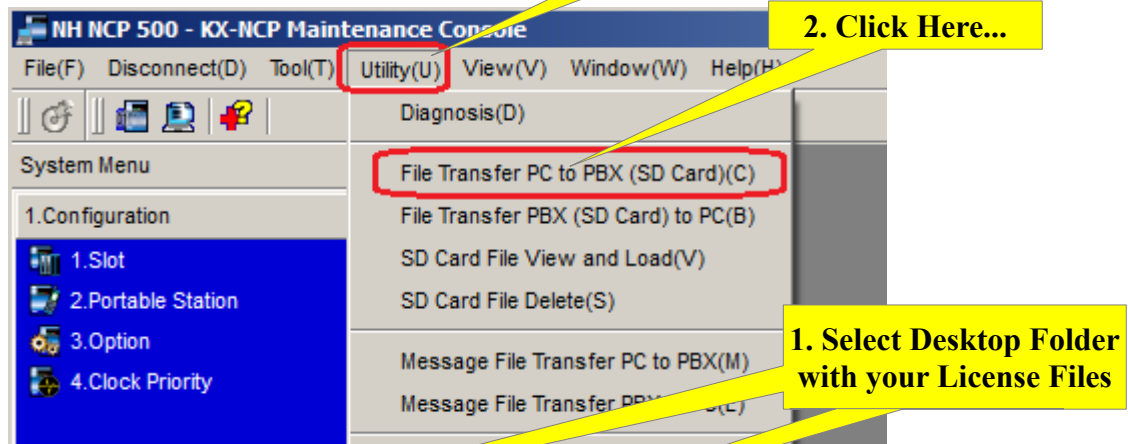


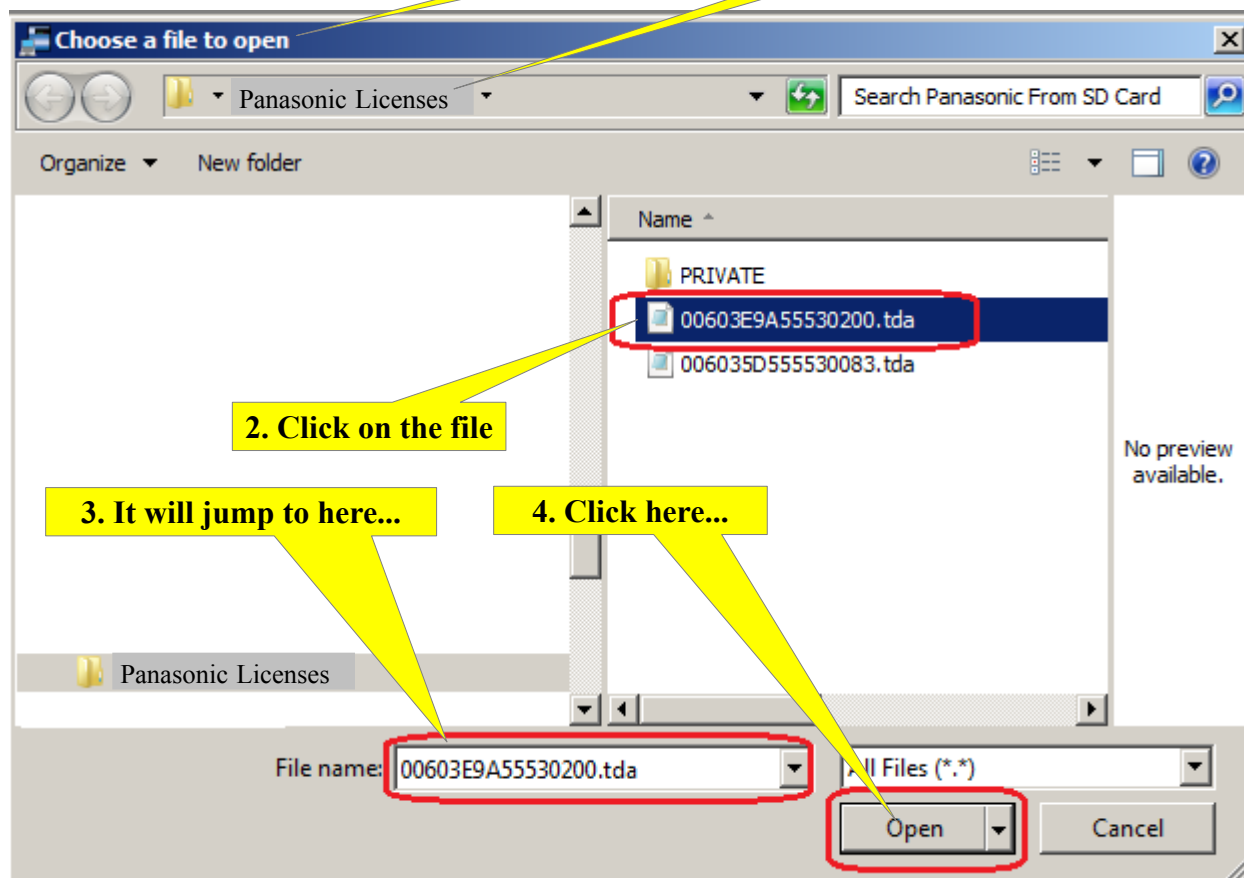
How To Install License File Into Panasonic KXT- KSU's Telquest Tech Support

Place the License / Activation Files in a folder on your Desktop named Panasonic Licenses.
This will make it easy to find later.

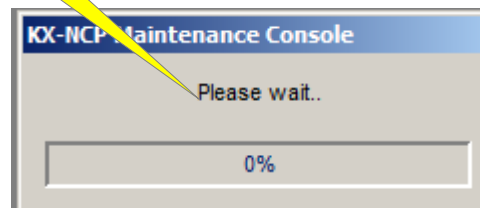
Open the Panasonic Programing Tool and connect to the KSU.



Next Screen:

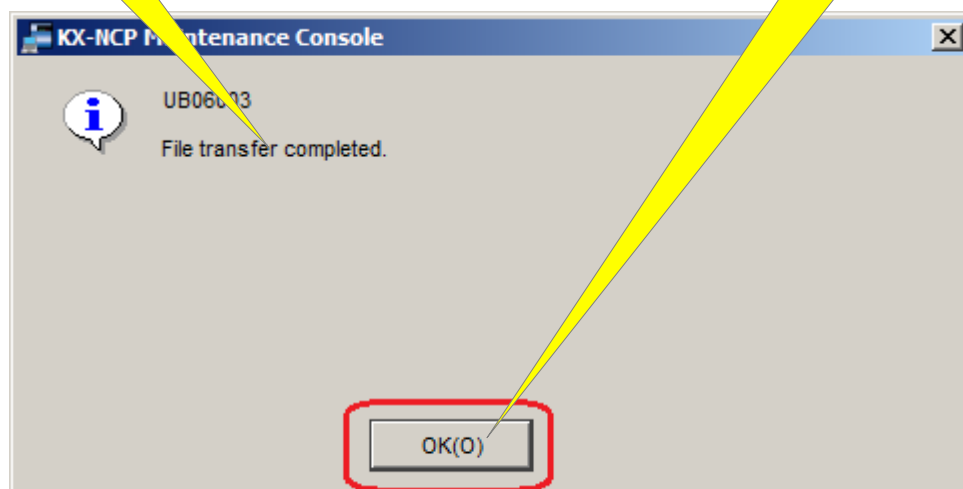


This will appear...



This will appear...

Click here...



Your License File/Activation Key has been installed.

If you have any additional Licenses to install, repeat the cycle.